

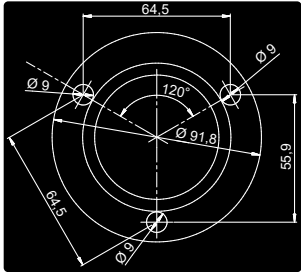
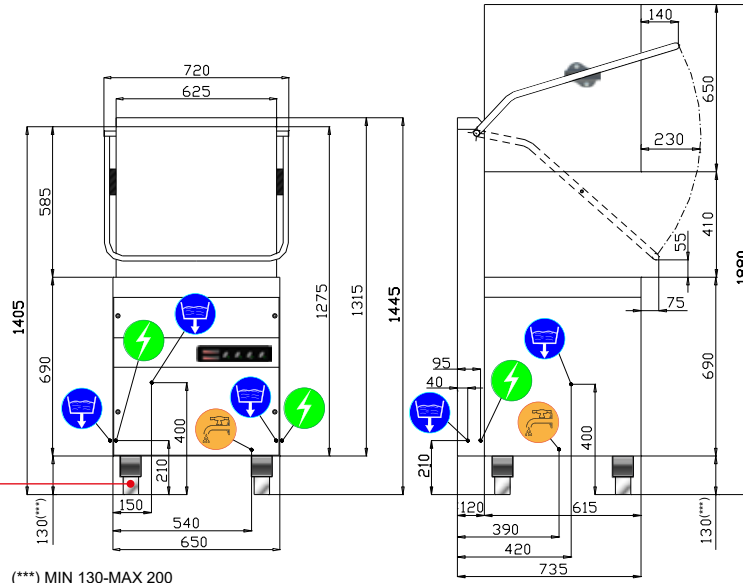
HOOD TYPE DISHWASHER

HT I I T

- Partial drain and fill operation
- Double walled 304 stainless steel structure
- Easy to use electronic touch panel
- 3 wash cycles
- Double skin insulated hood
- Hood operating START/STOP functions
- Deep-formed tank
- Independent wash/rinse arms
- Double tank filter + pump filter
- Straight through **or** corner application
- Detergent and rinse aid pumps are included
- Optional drain pump is available
- Perfect for functionality, reliability and versatility
- Be sure to ask about our **3M** water filters and water softeners to improve your final results and extend the life of your equipment...



	WATER CONNECTION 3/4" GAS
	DRAINING Ø 24mm
	ELECTRICAL SUPPLY


PIEDINO MARINA / MARINA FOOT


(***) MIN 130-MAX 200



TECHNICAL DATA	
EXTERNAL DIMENSIONS	
width	720 mm
depth	735 mm
height	1445/1880(open hood) mm
WEIGHT	100 kg
VOLTAGE	400V 3N 50Hz
POWER REQUIRED	10120 W
WATER HARDNESS	2-8 °F
INLET WATER PRESSURE	200-400 kPa
CROCKERY DIMENSIONS	
plates diameter	410 mm
trays max. dimension	GASTRONORM 1/1 (530x325)
RACK DIMENSION	500X500 mm
RACK EQUIPMENT	2XC40 - 1XC44 - 2X15060
WASHING CYCLES	(s) 1 (50) 2 (120)
WATER SUPPLY 55°C	
racks/h(*) ⁽¹⁾	70 30
WATER SUPPLY 10°C	
racks/h(*) ⁽¹⁾	34 30
WATER CONSUMPTION / CYCLE (water pressure 200kPa)	2.8 L
BOILER CAPACITY	10 L
BOILER HEATING ELEMENT	9000 W
RINSING TEMPERATURE (SET)	85°C
TANK CAPACITY	30 L
TANK HEATING ELEMENT	2700 W
TANK TEMPERATURE (SET)	55°C
PUMP POWER	1120 W(630 L/min ^{***})
DRAIN PUMP (optional)	25W h MAX scarico 0,8m(40L/min ^{***})
NOISE	63,6±0.7 dB(A)

(*) STANDARD TERMOSTOP

(***) MAXIMUM FLOW RATE

(†) In case of cold water supply and/or continuous washing, the rinse-water heating process might take more time than usual, until the proper rinse temperature is reached. For this reason, the wash-cycle total timing might result longer than set.