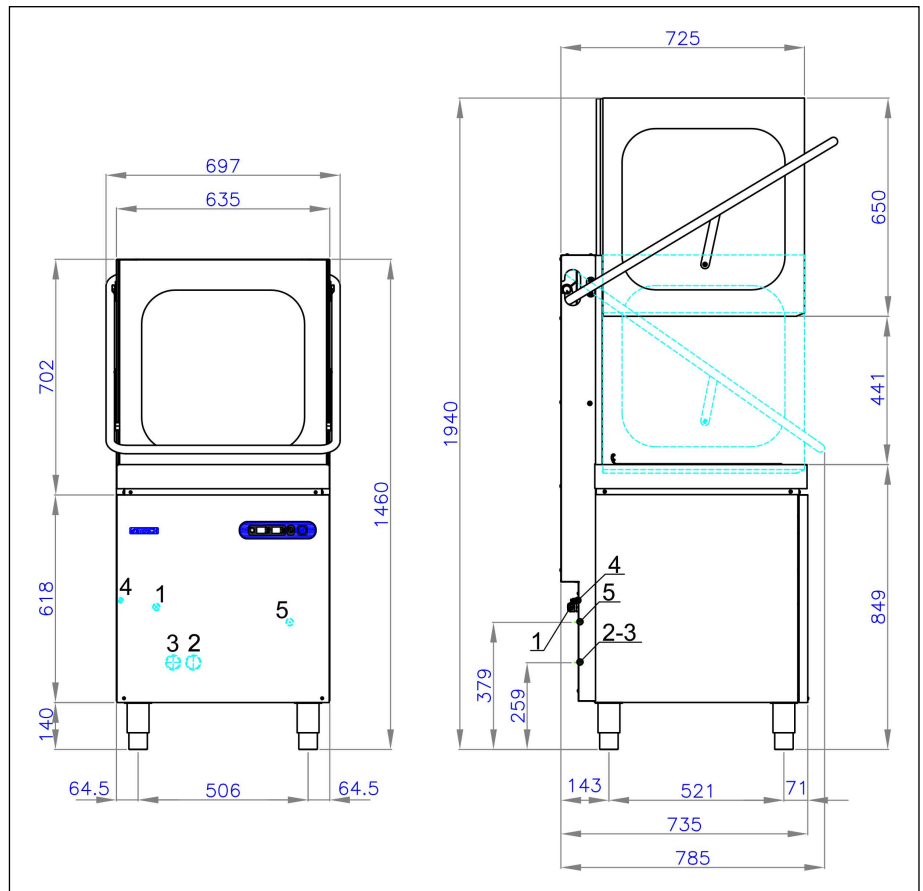
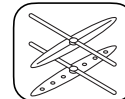




3/4 shut off valve
max 125F (55C)



1. 208V / 240V 50/60Hz 1 Phase 30Amp breaker
2. Water drain pipe Ø25mm. Flexible hose supplied
3. Water line requirements Ø3/4" max temp 125F (55C)
4. Built-in Detergent and Rinse-aid dispenser



- Moulded wash tank with rounded corners and double wall (insulated hood upon request).
- Full-width wash tank filters.
- TOUCH control panel with 5 preset wash cycle times.
- Magnetic microswitch to cut out operation of the appliance when door is opened.
- Useful washing height 41 cm, dish Ø44 cm.
- Square basket 50x50 cm (supplied with 2 plate baskets, 1 flat basket, 2 cutlery holders).
- Independent lower/upper washing and rinsing arms.
- Timed manual cold rinse.
- Washing cycle time 60-90-120-150-180 seconds (capacity 1200÷400 pz/h).
- Displays show the boiler and tank temperature.
- Countdown of the washing cycle underway in minutes and seconds.
- Standard built-in rinse-aid and detergent pumps

- Self-cleaning cycle (CLN).
- Booster pump and built-in insulated atmospheric rinse tank made in AISI 304L stainless steel.
- Boiler and tank heating through thermostatically protected armoured heating elements (in exchange).
- The tank water heating is indirect (heating element is not inside the tank).
- Tank capacity lt. 25 and boiler capacity lt. 13.
- Water consumption per cycle lt. 3,5 - Water pressure input ATE 2,0-3,0 - Max temperature of inlet water 55°C.
- Tank heating element kW 3,0 - Boiler heating element kW 6,0
- Washing pump power Hp 1,2.
- Booster pump power kW 0,30.
- Noise level at 1 mt. < 70 dbA.
- Total power kW 6,90.
- Warranty 2 years parts, 1 year labour

Note

Can be used in **straight-line and corner installations** in combination with prewash inlet tables and outlet tables. **Standard:** Automatic start on hood closing (can be disabled in software)